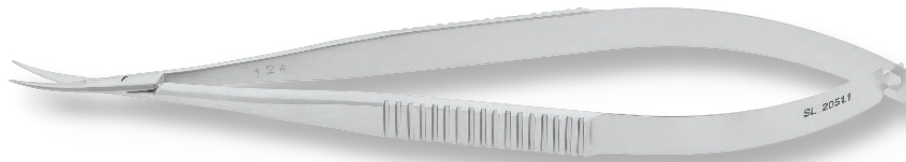




# MICRO SCISSORS

## 10MM SHORT FINE CURVED BLADES



SKU	Blade Size	Handle	Total Length	Alloy
SL2117.1	10mm	Flat	4.25" (11cm)	Stainless Steel
SL2051.1			5.75" (15cm)	
SL2001.1			6.25" (16cm)	
SL2001.2			8.25" (21cm)	Titanium
SL2009.2			9" (23cm)	
SL2013.2				